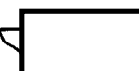
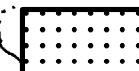

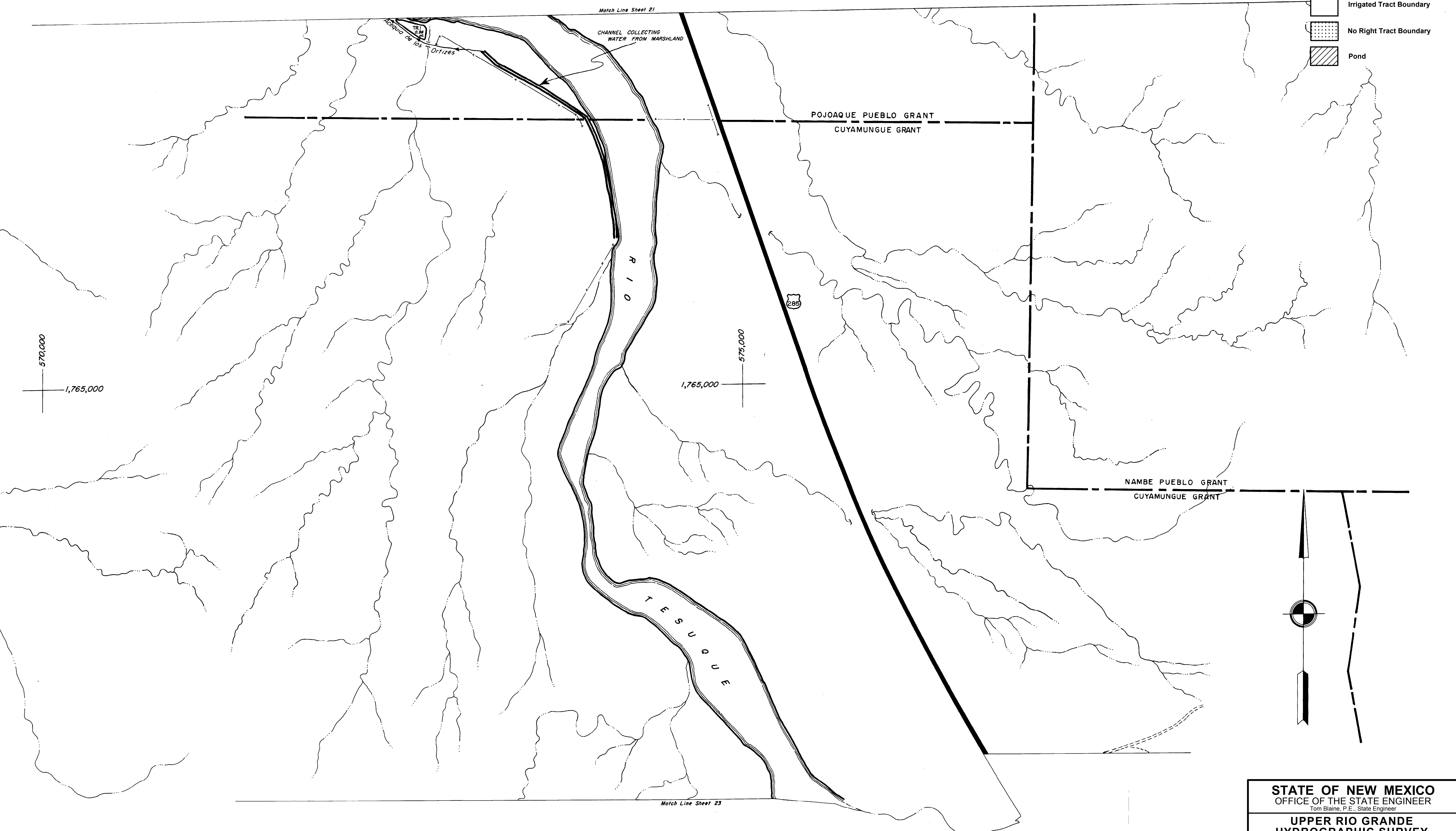


Legend

-  Irrigated Tract Boundary
-  No Right Tract Boundary
-  Pond



STATE OF NEW MEXICO
 OFFICE OF THE STATE ENGINEER
 Tom Blaine, P.E., State Engineer

UPPER RIO GRANDE
HYDROGRAPHIC SURVEY
 NAMBE - POJOAQUE - TESUQUE 1964 - 2017
 Final Judgment and Decree

| | | |
|--|---|---------------------------------|
| ENGINEER SURVEYOR STEREOCOPIATION TRACED BY APPROVED | F. R. ALLEN F. BARRON J. L. THOMAS A. BACIGALUPA | SCALE 1" = 300' SHEET NO. 22 |
|--|---|---------------------------------|